



# EnviroLoc

Hydromulching Bonded Fibre Matrix

Advanced science  
for greater erosion control  
and growth performance.



1300 040 050  
[spraygrassaustralia.com.au](http://spraygrassaustralia.com.au)



Health & Safety  
AS/NZS 4801



Environment  
ISO 14001



Quality  
ISO 9001

# Presenting the next drive in revolutionary erosion control

EnviroLoc Hydromulching BFM is a hydraulic erosion control product that utilises a high-performance matrix with a combination of optimised water and nutrient retention, and an enhanced growth environment.

Designed around superior performance, EnviroLoc Hydromulching BFM projects erosion control effectiveness, growth establishment and functional longevity in order to create a high-performing growth medium matrix.

The flexible, yet stable matrix immediately bonds to the surface while the combination of thermally refined wood fibres and multi-dimensional biopolymers provide greater water holding capacity for more complete germination and faster establishment of vegetation.

- Increased erosion protection
- Provides more soil cover
- Improved plant germination due to higher water retention.
- Long fibres ensure there is no reduction in infiltration and air exchange
- Environmentally friendly containing non-toxic recycled and biodegradable materials



## 3D Fibre Matrix Technology

The combination of both chemical and mechanical bonding techniques is what locks the engineered growth medium in place to promote germination with reduced soil loss levels. Here's why it works so well:

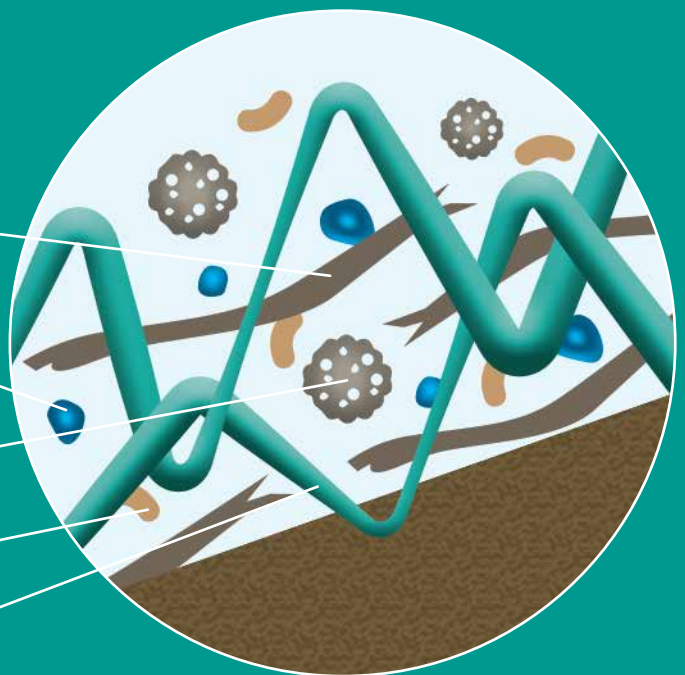
100% thermally refined wood fibres not only produce high yield and coverage, they are also Phyto-Sanitised to eliminate potential weed seeds and pathogens.

Biopolymers and water absorbents are 100% non-toxic to further enhance overall performance for project success.

Innovative micro-pore particles enhance water and nutrient retention while contributing to erosion effectiveness.

Dispersion granules ensure that the elements are evenly mixed and uniformly distributed.

Interlocking crimped fibres increase strength and matrix durability.



# 7 Essential Benefits



# How EnviroLoc Hydromulching BFM works

EnviroLoc Hydromulching BFM is a two-step application process. Essentially a heavy-duty growth medium, BFM employs a combination of two passes over the surface area. The first step involves spraying a mix of seed, fertiliser and water over the surface, while the second step consists of spraying over the seed with a slurry consisting of proprietary binder and tackifier blended with EnviroLoc Hydromulching

BFM. By applying the seed first, followed by the BFM, it allows for the growth medium to be applied to any surface type and achieve superior bonding performance. It works to provide increased erosion control performance on steep batters, slopes, verges and flat areas - especially when utilised in combination with EnviroSoil - until vegetation establishes and stabilises through root reinforcement.



## 6 Quality growth

A combination of optimum growing conditions and adequate time promote and achieve outstanding establishment of seeded plants.

## 5 Drone spraying

4-8 weeks after application and utilising a drone, a blend of site specific fertiliser, soil conditioners and probiotics are sprayed over the revegetated area.

## 4 EnviroLoc Hydromulching BFM

A second pass is undertaken, consisting of EnviroLoc Hydromulch BFM combined with a proprietary binder and tackifier to ensure erosion effectiveness.

## 3 Hydraulically applied seed

A combination of water, seed and amelioration are applied to the substrate first to ensure effective seed-to-soil contact.

## 2 EnviroSoil application

The addition of a topsoil replacement, EnviroSoil provides a blend of key soil building components to create an optimum growth environment.

## 1 Depleted soils

Soils associated with disturbed lands are characteristically lacking much needed organic matter, nutrients and biological activity.



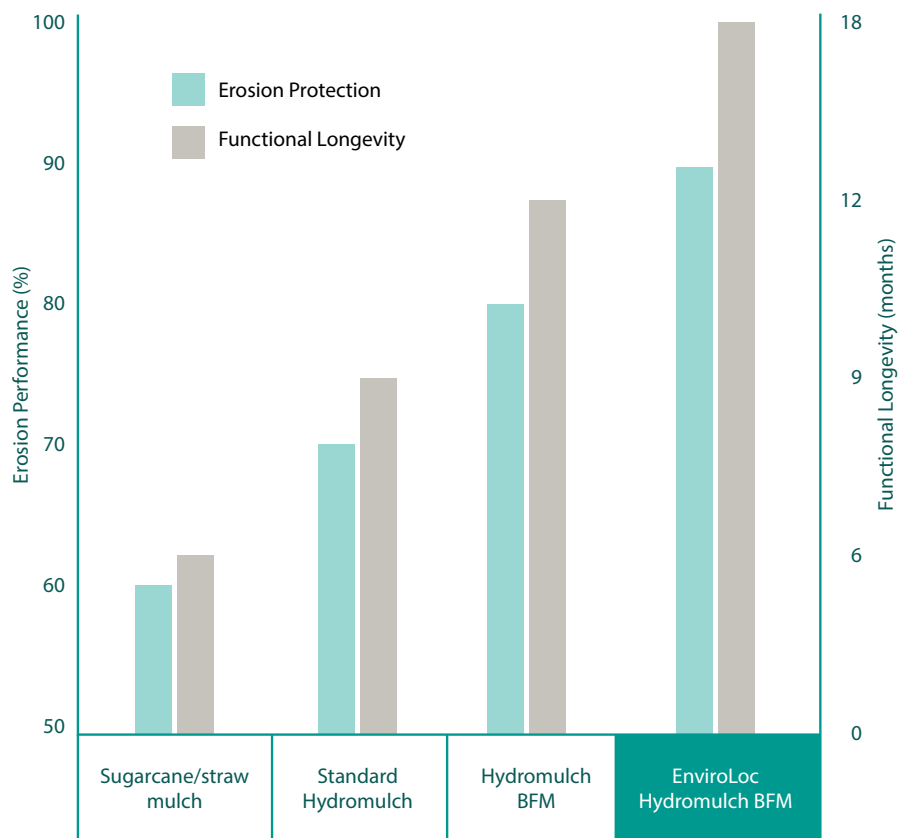
# Why does it work so well?

## Erosion Control Performance

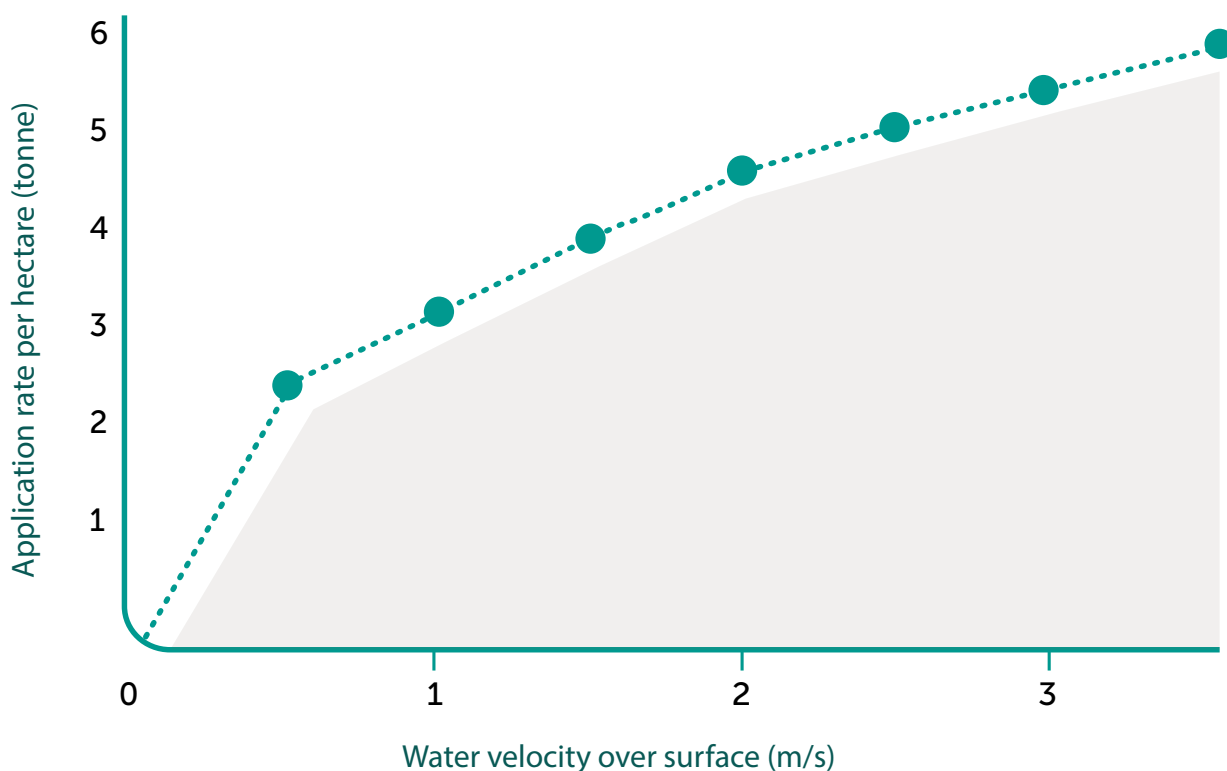
The flexible, yet stable matrix works to control erosion effectiveness, establish growth and functional longevity, allowing for dormancy throughout arid periods and ensuring the stability of the revegetation efforts.

## Functional Longevity

EnviroLoc Hydromulching BFM can last up to 18 months when taking in to consideration the physical composition of the mulch as well as site specific conditions such as temperature, moisture, soil conditions, sun exposure and other environmental factors.



## Water Flow Resistance



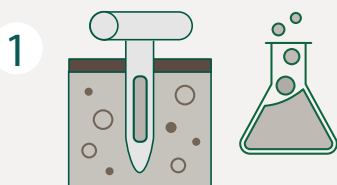
## Keep more soil onsite

Controlling the adversely negative impacts of erosive forces such as wind and heavy rainfall on soils is vital in preserving soil volume. Without effective erosion control in place, multiple soil types are naturally exposed to the physical erosive forces of wind and water, stripping valuable topsoil, nutrients and potentially causing further damage to waterways and triggering ground movements.

Vegetation plays a huge role in the health of the environment; It controls erosion, provides stability to landform surfaces through root reinforcement, reduces land degradation and salinity, and provides a habitat for biodiversity and animal species.



## Our EnviroLoc Hydromulching BFM Process



### Collect & assess

Soil testing provides essential information to determine how we can optimise vegetative growth in any given environment.



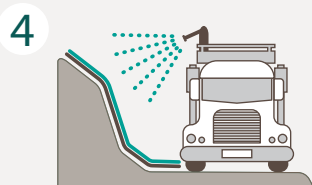
### Choose optimal species

Choosing the best plant species to suit the project location, site conditions, intended use and maintenance ensures success.



### Tailor the best solution

We carefully select the best erosion control products depending on the individual requirements of the project.



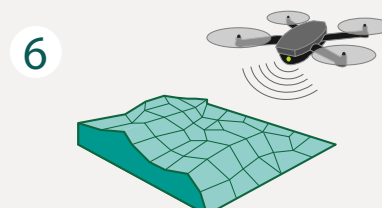
### Apply even application

Our highly trained technicians ensure the solution is mixed perfectly and applied evenly to deliver the best possible results.



### Drone spraying

Latest drone technology allows us to apply fertiliser, trace elements and soil probiotics 4-8 weeks after seeding application to ensure project success.



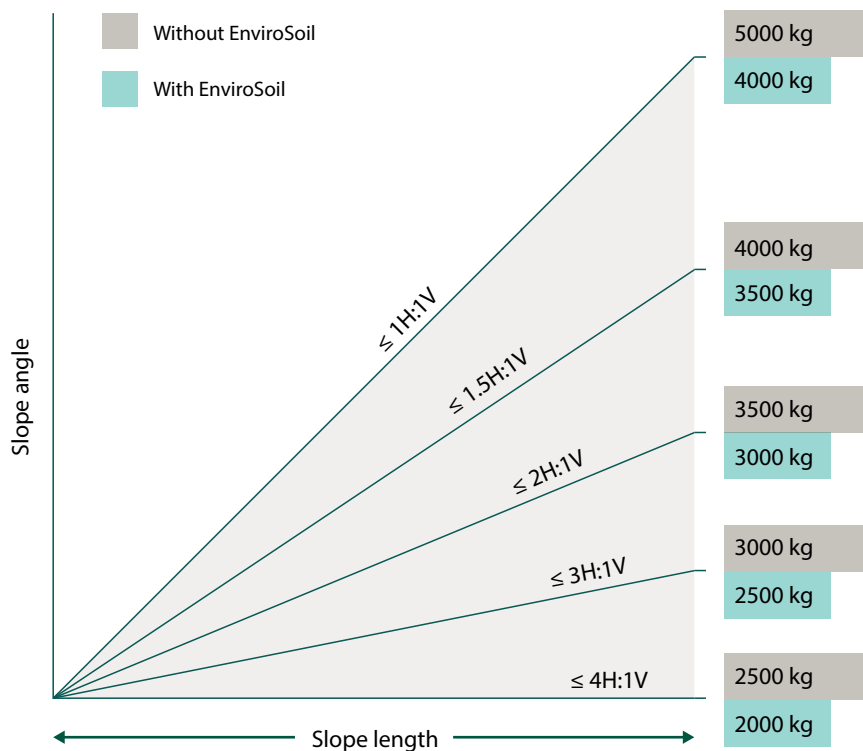
### Post project monitoring

Monitoring drones fitted with the latest scanning and imaging technology make sure the project is going as perfectly as planned.

# Application of EnviroLoc Hydromulching BFM

Utilising a hydroseeder, EnviroLoc Hydromulching BFM is applied utilising water as a carrier onto substrates which are unusually arid, uneven, severely sloped or prone to erosive soil conditions. BFM conforms to the contours of the ground and dries to form a Bonded Fibre Matrix. Once dry, the matrix can be hydrated repeatedly and will hold soil and seed without washing away. It provides a cost-effective and safe alternative to traditional erosion control blankets that are prone to voiding and bridging and has been designed for sites with extreme conditions where HGMs alone may not be the optimal solution to achieve success.

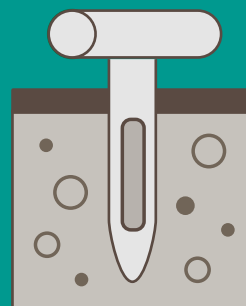
We understand that each project is different, and each has its own goals and challenges. That is why we have created EnviroLoc Hydromulching BFM to be a tailored solution, allowing for the addition to the mixture at the time of spraying of soil amendments to further ensure the success of revegetation and rehabilitation projects.



EnviroLoc Hydromulching BFM can be applied quickly, even under wet conditions, reducing labour and minimising safety concerns while providing immediate protection and superior performance.

## Free Soil Test

We believe that soil is the foundation for success of any revegetation project, so our programs are always based on a thorough understanding of the physical, chemical and biological characteristics found on site. Our process begins with collecting and assessing soil samples to create optimum soil conditions. Results provide us with essential information to determine what adjustments need to be made to assure a favourable growing environment. With access to over 100 various ameliorants, we are able to improve the properties of the soil's physical and microbiological environment with ease. Talk to our specialist team about how a soil test can benefit your project.





















# The best Hydromulching BFM on the market



## 100% Success rate guaranteed



### ***SUPPLY***

Our products and services are backed by the expertise and consultation of our specialist team of Australia's leading agronomists, horticulturalists and soil scientists. We have extensively tested EnviroLoc Hydromulching BFM's performance in some of the most depleted and degraded soils in Australia, which is why we are confident that you will achieve project success the first time around.



### ***APPLY***

Feel confident that you are hiring knowledge and expertise. Our highly trained technicians utilise our specialist equipment to apply product with precision and accuracy, meeting Australian Safety, Environmental and Quality standards.



### ***GUARANTEE***

Access qualified advice from our specialists about how we can guarantee outstanding results on your next project when our products are supplied and applied onsite by our expert team.



Australian  
Owned & Made

**1300 040 050**  
spraygrassaustralia.com.au

